



**helping to enable
garment circularity.**

Zipper for PET Garment recycling

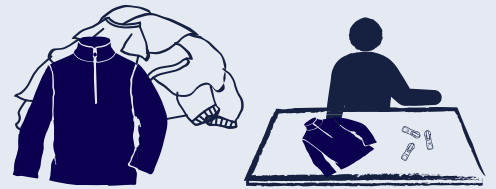
NATULON+Plus[®] with Recycled PET Open Parts

YKK[™]

Little Parts. Big Difference. >>>

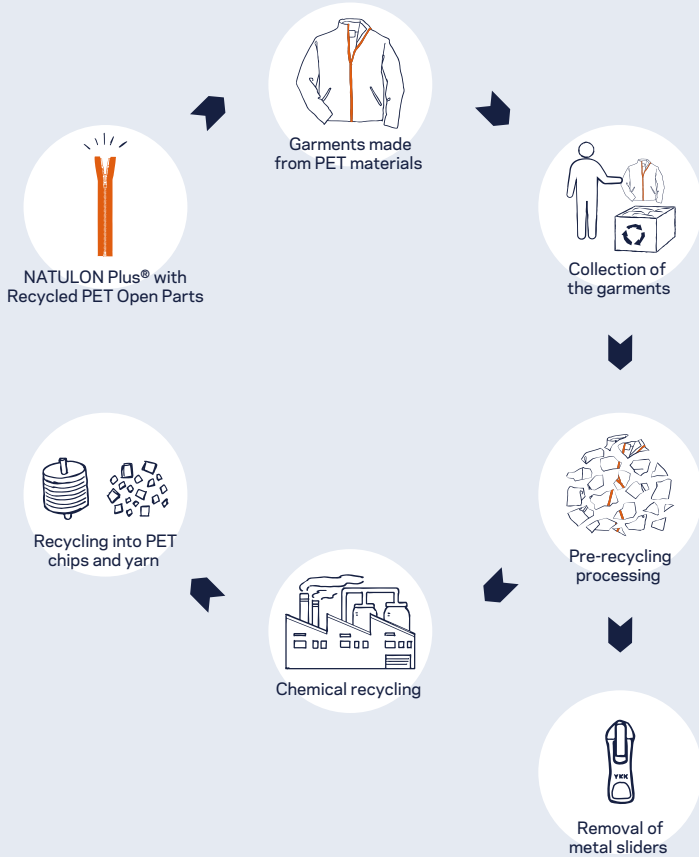
helping to enable the circular economy

In the fashion industry, many textile products end up in landfills and incinerators. One of the challenges in recycling garments is that many different materials, including accessories like zippers, are used.



as a zipper manufacturer, YKK wants to contribute to the realization of fiber-to-fiber recycling.

If we can make zipper from the same material as clothing as much as possible, we believe that people will be able to recycle them along with garments.



product concept



contributes to the ease of recycling of polyester garments

To maintain consistency with the same material as the garment, most components are made from PET*. YKK developed the PET material for injection molding in-house.

* The slider uses metal, and the film uses PBT materials.

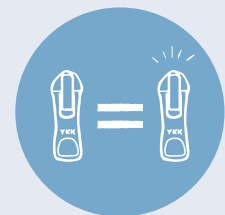


made with recycled materials

Many components use recycled PET, achieving a recycled material ratio of approximately 74% in the cut zipper*.

* This is the calculation in the event that the zipper is 60 cm with a slider made of copper and zinc alloys (code: DA86). Please contact us for more information.

* The recycled material ratio is an internal calculation based on weight.

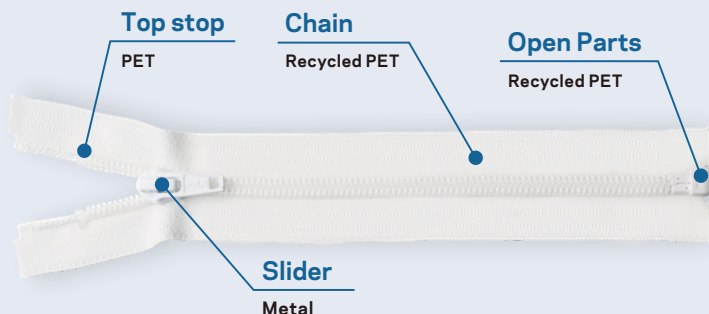


emphasis on durability with the use of metal sliders

The sliders are made of metal for durability and separation. We believe that contributing to the extended lifespan of end products is equally important as making them easy to recycle.

NATULON Plus® with Recycled PET Open Parts

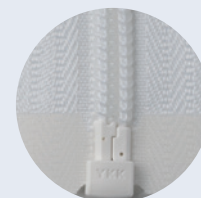
material composition



color variations



#580



#501

item availability

Size/ Chain Type	Classification				
	5CIBE	Close	Open	Two-way	Chain
	5CIBE	-	OK*	-	-



Please scan here for details.

* The front-side use and right insertion only

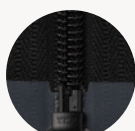
care information -Heat resistance-

Injection molded PET products are sensitive to heat, and may deform when exposed to high temperatures of approximately 70°C. We therefore recommend conducting garment testing with this zipper sewn into place. Furthermore, please consider including a warning on the product label to advise against exposure to high temperatures during washing and tumble drying.

product options -As choices pursuing heat resistance and color variations-

NATULON Plus® with Recycled PBT Open Parts

color variations



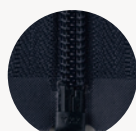
#580



#501



#558



#560



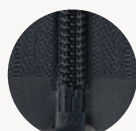
#572



#574



#576



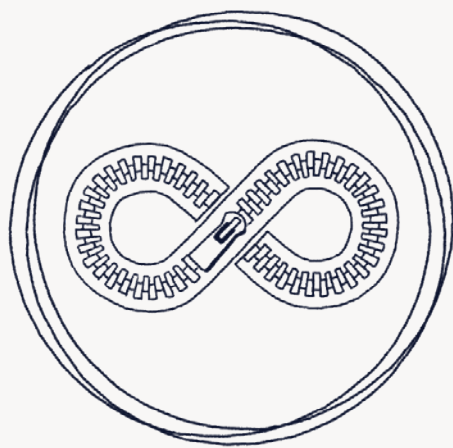
#578

NATULON Plus® with Recycled PBT Open Parts, which uses PBT for the open parts, was developed as an alternative option to the NATULON Plus® with Recycled PET Open Parts. Recycled PBT Open Parts are available in eight colors, and offer relatively high heat resistance. Furthermore, since PBT possesses a structure similar to PET, depending on the recycling method employed, it may be possible to recycle them together with PET garments.

item availability

Size/ Chain Type	Classification				
	5CIBE	Close	Open	Two-way	Chain
	5CIBE	-	OK※	-	-

* The front-side use and right insertion only



 YKK
DIGITAL
SHOWROOM.
Experience our story.™



 YKK CORPORATION

"YKK", "YKK Little Parts. Big Difference.", "YKK DIGITAL SHOWROOM", "Experience our story." and "NATULON Plus" are registered trademarks or trademarks of YKK CORPORATION in Japan and other countries/regions.

©2025 YKK CORPORATION
Oct. 2025 Y